

WALL MOUNTED  
AND FLOOR STANDING BOILERS

# AMICA *più*

*more*

SAFETY

*more*

FUNCTIONALITY

*more*

EFFICIENCY

*more*

DESIGN





From experience and tradition, the evolution continues with: **AMICA PIÙ**.

The foundation on which lies the research for a constant improvement is the consolidated competence in the domestic heating field and, more specifically, in cast iron boilers.

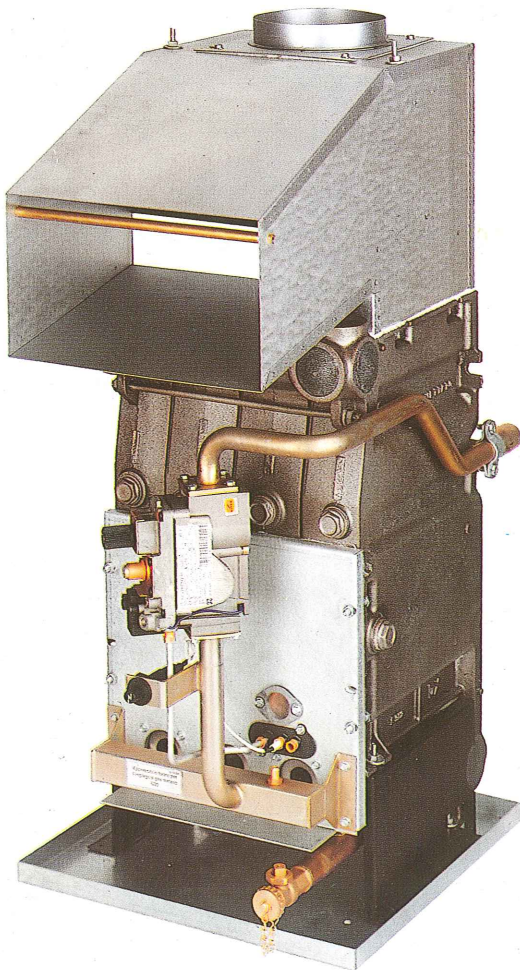
Gruppo Imar always believed in the great hard of the long lasting cast iron, in its efficiency and cost. For this reason, from a technology evolved and enriched by a research asset, was born Linea Amica, a fired wall mounted and floor standing boilers, and for this reason today Gruppo Imar offers something

## *more* SAFETY

### FLUE GASES SAFETY DEVICE

To reduce living quarters pollution risks due to combustion products, this device operates to safeguard the end user in the following cases:

- insufficient flue gas exhaust system
- accidental exhaust system obstructions
- wrong connection to the chimney
- adverse weather conditions
- insufficient ambient ventilation



## THE NEW ELECTRICAL EQUIPMENT

The AMICA PIÙ electrical equipment has been designed according to the more advanced safety standards and is therefore perfectly capable to ensure the user's safety.

## *more* FUNCTIONALITY

### FLUE GASES COWL

The new cowl is conceived to permit many installation possibilities: AMICA PIÙ can be installed with horizontal or vertical flue gas exhaust pipes without any kind of bend.

### CONDENSATION RECEIVER

AMICA PIÙ is equipped with a useful container, designed to gather condensation fluids, possible water leaks, avoiding floor or other surfaces wetting and also eliminating irradiation dispersions.

### BOILER AND HOT WATER TANK FAUCET

Both the hot water tank and the boiler can be emptied with specifically designed faucets. This operation permits easily to unload the equipment for easier maintenance, and also to avoid adverse effects of ice.

### FORCED DRAUGHT

All AMICA PIÙ types, up to the 4th version, can be equipped with a forced draught device (fan). Such device can be very easily



f the Gruppo Imar Company

stant performance in time.  
wide range of cast iron gas  
g more:

# AMICA *più*

installed internally, directly in the flue gases exhaust cowl.

This way, both for floor standing and wall mounted boilers, the problem due to the absent or insufficient chimney, can be solved.

## *more* EFFICIENCY

### BETTER EFFICIENCY

With AMICA PIÙ the combustion efficiency has been increased improving its compatibility to the new range of powers required to better satisfy different conditions of living quarters.

### BETTER INSULATION

Boiler and hot water tank are equipped with better insulation material and also with reflector screens.

### ELECTRONIC IGNITION

After severe research, Gruppo Imar developed an innovative electronic ignition and flame control system, already successfully experimented in other applications, and presently installed also on AMICA PIÙ.

This system, based on a pilot burner, ensures perfect ignitions and, thanks to a gas valve with higher reliability class, a total safety of the appliance. The pilot burner is used only in the ignition phase, and is shut-off when not utilized, allowing gas saving.

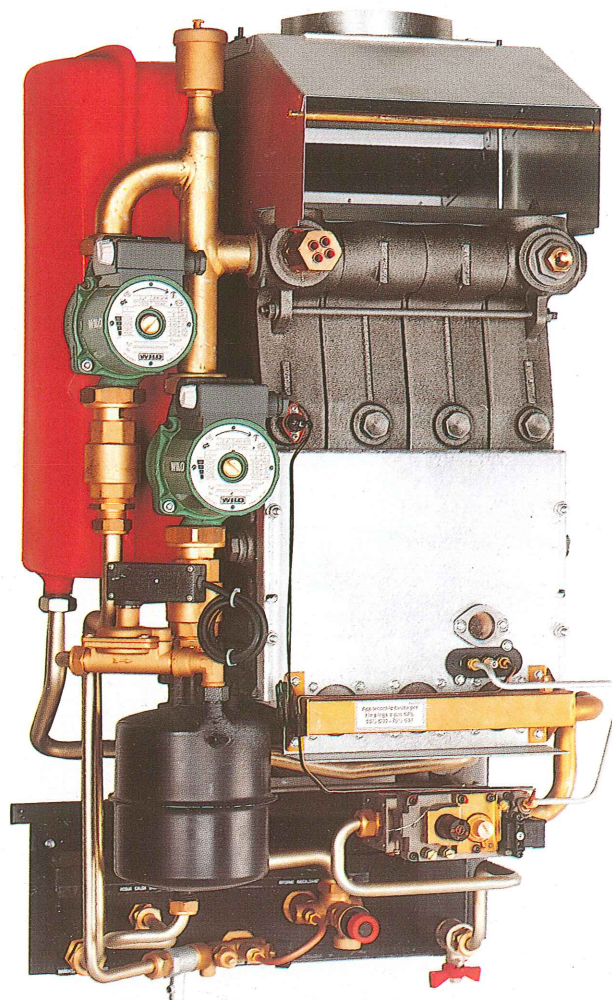
## *more* DESIGN

### THE LINE

Simplicity and austerity give AMICA PIÙ a slender line and its elegance does not burden or clash with the surrounding ambience.

### THE COLOUR

A new white colour confers a brighter aspect, more suitable to be introduced in any kind of decoration.

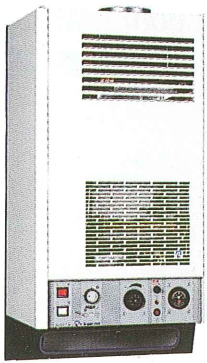




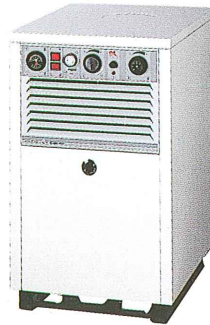
# AMICA PIÙ WALL MOUNTED

# AMICA PIÙ FLOOR STANDING

## Serie MB-PMB



## Serie N-N/AE-NB



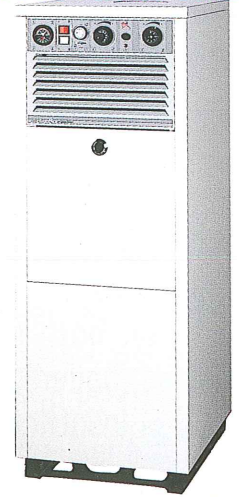
## Serie PLB



## Serie PRB



## Serie PA-PA/AE-PAB



# AMICA PIÙ

	MODEL	FLOOR STANDING										
		AI			AE			AI				
		N.			N.			N.B.				
GENERAL DATA		VERSION	2ª V	3ª V	4ª V	5ª V	6ª V	7ª V	2ª V	3ª V	4ª V	
TECHNICAL DATA	INPUT AND OUTPUT	MAX. INPUT	kW	18,25	27,91	34,77	44,77	53,49	62,21	18,25	27,91	34,77
			kcal/h	15700	24000	29900	38500	46000	53500	15700	24000	29900
	MAX. OUTPUT		kW	15,8	24,28	30,23	38,95	46,53	54,12	15,8	24,28	30,23
			kcal/h	13590	20880	26000	33490	40000	46540	13590	20880	26000
	BOILER DATA	APPLIANCE CATEGORY		III	III	III	II <sub>2H3</sub>	II <sub>2H3</sub>	II <sub>2H3</sub>	III	III	III
		PROTECTION RATING		IP20	IP20	IP20	IP20	IP20	IP20	IP20	IP20	IP20
		VOLTAGE	V	220	220	220	220	220	220	220	220	220
		FREQUENCY	Hz	50	50	50	50	50	50	50	50	50
		REQUIRED POWER	W	12	12	12	24	24	24	143	143	143
		MIN. POWER	W	3,5	3,5	3,5	3,5	3,5	3,5	56,5	56,5	56,5
MAX. POWER		W	3,5	3,5	3,5	3,5	3,5	3,5	56,5	56,5	56,5	
NOISE LEVEL		dB	45	45	45	45	45	45	45	45	45	
BOILER MAX. OP. PRESSURE		bar	3	3	3	3	3	3	3	3	3	
TEST PRESSURE		bar	4,5	4,5	4,5	4,5	4,5	4,5	4,5	4,5	4,5	
D.H.W. TANK/HEAT EXCHANGER DATA	BOILER WATER CONTENTS	dm <sup>3</sup>	6	7,5	9	11	12,5	14,5	7	8,5	10	
	MAX. BOILER OPERATING TEMPERATURE	°C	90	90	90	90	90	90	90	90	90	
	HOT WATER TANK/HEAT EXCHANGER MAX. OP. PRESSURE	bar										
	TEST PRESSURE	bar										
	HOT WATER TANK CONTENTS	dm <sup>3</sup>										
	DOMESTIC WATER FLOW IN 10 min. IN: 12°C-OUT: 48°C	dm <sup>3</sup>										
	HEAT OUTPUT TO DOMESTIC HOT WATER CONTINUOUS Δt= 30 K	kW										
	DOMESTIC HOT WATER FLOW RATE CONTINUOUS Δt= 30°C	dm <sup>3</sup> /min										
	HEIGHT	mm	845	845	845	1445	1445	1445	845	845	845	
	MAX. DIMENSIONS	WIDTH	mm	425	425	500	575	650	725	425	500	575
	DEPTH	mm	600	600	800	600	600	600	600	600	600	
	WEIGHT	Kg	66	80	95	113	125	140	79	94	108	
	FLUE GASES EXHAUST PIPE Ø	mm	130	130	150	180	180	180	130	130	150	

# AMICA PIÙ

	MODEL	FLOOR STANDING													
		AI		AE		AI		AI							
		P.A.		P.A.		P.A.B.		P.L.B.		P.R.B.					
GENERAL DATA		VERSION	2ª V	3ª V	4ª V	5ª V	2ª V	3ª V	4ª V	2ª V	3ª V	4ª V	3ª V	4ª V	
TECHNICAL DATA	INPUT AND OUTPUT	MAX. INPUT	kW	18,25	27,91	34,77	44,77	18,25	27,91	34,77	18,25	27,91	27,91	34,77	
			kcal/h	15700	24000	29900	38500	15700	24000	29900	15700	24000	29900	24000	29900
	MAX. OUTPUT		kW	15,8	24,28	30,23	38,45	15,8	24,28	30,23	15,8	24,28	30,23	24,28	30,23
			kcal/h	13590	20880	26000	33490	13590	20880	26000	13590	20880	26000	20880	26000
	BOILER DATA	APPLIANCE CATEGORY		III	III	III	II <sub>2H3</sub>	III	III	III	III	III	III	III	III
		PROTECTION RATING		IP20	IP20	IP20	IP20	IP20	IP20	IP20	IP20	IP20	IP20	IP20	IP20
		VOLTAGE	V	220	220	220	220	220	220	220	220	220	220	220	220
		FREQUENCY	Hz	50	50	50	50	50	50	50	50	50	50	50	50
		REQUIRED POWER	W	143	143	143	155	274	274	274	274	274	274	274	274
		MIN. POWER	W	56,5	56,5	56,5	56,5	109,5	109,5	109,5	109,5	109,5	109,5	109,5	109,5
MAX. POWER		W	56,5	56,5	56,5	56,5	109,5	109,5	109,5	109,5	109,5	109,5	109,5	109,5	
NOISE LEVEL		dB	45	45	45	45	45	45	45	45	45	45	45	45	
BOILER MAX. OP. PRESSURE		bar	3	3	3	3	3	3	3	3	3	3	3	3	
TEST PRESSURE		bar	4,5	4,5	4,5	4,5	4,5	4,5	4,5	4,5	4,5	4,5	4,5	4,5	
D.H.W. TANK/HEAT EXCHANGER DATA	BOILER WATER CONTENTS	dm <sup>3</sup>	13	14,5	16	18	14	15,5	17	13	14,5	16	9,5	11	
	MAX. BOILER OPERATING TEMPERATURE	°C	90	90	90	90	90	90	90	90	90	90	90	90	
	HOT WATER TANK/HEAT EXCHANGER MAX. OP. PRESSURE	bar	10	10	10	10	10	10	10	10	10	10	10	10	
	TEST PRESSURE	bar	15	15	15	15	15	15	15	15	15	15	15	15	
	HOT WATER TANK CONTENTS	dm <sup>3</sup>	60	60	60	60	60	60	40	40	40	40			
	DOMESTIC WATER FLOW IN 10 min. IN: 12°C-OUT: 48°C	dm <sup>3</sup>	110	125	125	125	110	125	125	85	105	115			
	HEAT OUTPUT TO DOMESTIC HOT WATER CONTINUOUS Δt= 30 K	kW	15,70	23,25	23,25	23,25	15,70	23,25	23,25	15,75	23,25	27,91	23,25	27,91	
	DOMESTIC HOT WATER FLOW RATE CONTINUOUS Δt= 30°C	dm <sup>3</sup> /min	7,5	11,11	11,11	11,11	7,5	11,11	11,11	7,5	11,11	13,33	11,11	13,33	
	HEIGHT	mm	1345	1345	1345	1945	1345	1345	1345	845	845	845	845	845	
	MAX. DIMENSIONS	WIDTH	mm	500	500	500	575	500	500	575	650	725	575	650	
	DEPTH	mm	600	600	600	600	600	600	600	600	600	600	600		
	WEIGHT	Kg	135	148	161	177	145	158	173	140	153	165	100	114	
	FLUE GASES EXHAUST PIPE Ø	mm	130	130	150	180	130	130	150	130	130	150	130	150	

WALL MOUNTED	
M.B.	P.M.B.
3ª V	3ª V
26,74	26,74
23000	23000
23,25	23,25
20000	20000
III	III
IP20	IP20
220	220
50	50
144,5	275,5
60,4	113,4
45	45
3	3
4,5	4,5
8,5	9,5
90	90
	10
	15
	21,51
	18500
	10,27
850	850
500	500
400	400
75	84
150	150