



Oil burners

MACK





Oil burners

MACK



The Sime **Mack** range of oil burners have been developed specifically for matching with the following appliances:

Boiler	Burner model
Estelle/Rondò 3	<i>Mack 3</i>
Estelle/Rondò 4 -Rondò B 4	<i>Mack 4 - Mack 4 SP</i>
Estelle/Rondò 5 -Rondò B 5	<i>Mack 5 - Mack 5 SP</i>
Estelle/Rondò 6-7	<i>Mack 6</i>
1R 6 ÷ 1R 8	<i>Mack 6</i>
1R 9 / 2R 6 ÷ 2R 9	<i>Mack 7</i>

The **Mack** burner range is manufactured to comply with the Directive E.M.C. 86/336 EEC, Directive L.V. 73/23 EEC, Directive Machines 98/37 EEC and Directive Efficiency 92/42 EEC.

The **Mack models 3, 4 & 5** are equipped with a factory fitted pre-heater, adjusting resistance, which improves the combustion.

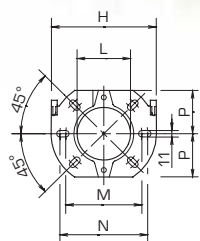
Easy installation and maintenance

Assembling the **Mack** is extremely simple as all the necessary accessories are included as standard. The main advantages of the **Mack** burner is reliability and quietness.

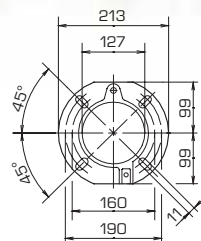
The burner casing attenuates noise levels as well as protecting all the components. Access to the internal components is from the front of the burner.

Dimensions

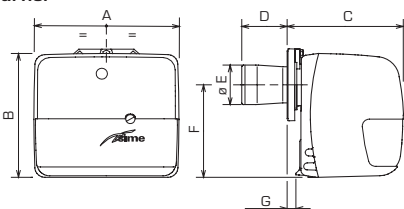
Mack 3-4-4SP-5-5SP-6 flange



Mack 7 flange



Burner



Type	A	B	C	D	øE	F	G	H	L	M	N	P
Mack 3	268	229	208	86	89	170	10	180	91	130	150	72
Mack 4 - 4SP	285	249	230	86	89	186	16	180	91	130	150	72
Mack 5 - 5SP	285	249	230	86	89	186	16	180	91	130	150	72
Mack 6	326	275	270	110	105	208	32	189	106	140	170	83
Mack 7	370	317	304	118	125	237	40	-	-	-	-	-

Technical features

		MACK 3	MACK 4-4SP	MACK 5-5SP	MACK 6	MACK 7
Output minimum/maximum	kg/h	1,4/2,2	2/3,2	2,8/3,9	3,5/10	8/18
Thermal power min./max.	kW	16,6/26	23,8/37,9	33,3/46,2	42/120	95/213,5
Motor						
Run current	A	0,7	0,7	0,7	0,8	1,4
rpm		2850	2850	2850	2850	2750
rad/s		298	298	298	298	288
Capacitor	µF	4	4	4	4	6,3
Pump pressure	bar	7÷15	7÷15	7÷15	7÷15	7÷15
Electrical protection grade	IP	40	40	40	40	40
Absorbed electrical power	W	165	185 - 130*	185 - 130*	170	300
Fuel						
Gas oil - max. viscosity at 20°C: 6 mm ² /s						
Electrical supply						
230V ±10% ~50Hz single phase						
Ignition transformer						
secondary 8 kV - 16 mA						

* Models SP

We pursue a policy of continuing improvement in design and performance of our products. The right is therefore reserved to vary specifications without notice.

