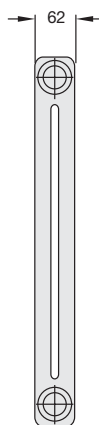


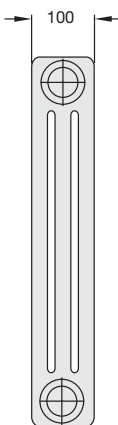


La maggiore distanza fra i singoli elementi conferisce a Zehnder Klinik una maggiore leggerezza e trasparenza conforme alle più severe norme igieniche che lo rendono particolarmente adatto ad ambienti ospedalieri e per grandi comunità.

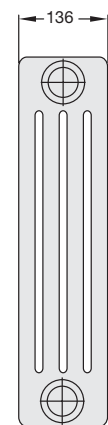
2 colonne



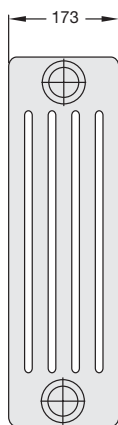
3 colonne



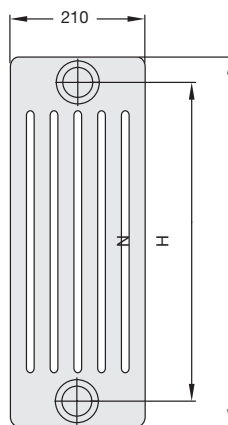
4 colonne



5 colonne



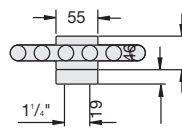
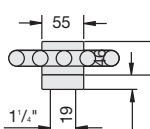
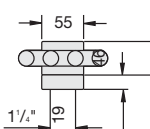
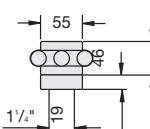
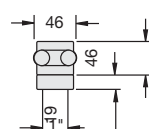
6 colonne



H = altezza
N = interasse
= altezza H - 58 mm
(2 colonne)
= altezza H - 66 mm
(da 3 a 6 col.)

Largh. = n° elementi x
65mm - 19mm

Misure in mm



Modelli disponibili

2 colonne Profondità - 62 mm				3 colonne Profondità - 100 mm				4 colonne Profondità - 136 mm				5 colonne Profondità - 173 mm				6 colonne Profondità - 210 mm			
Mo- dello	Altezza H mm	Resa termica		Mo- dello	Altezza H mm	Resa termica		Mo- dello	Altezza H mm	Resa termica		Mo- dello	Altezza H mm	Resa termica		Mo- dello	Altezza H mm	Resa termica	
		EN442 Δt 50 Watt	Δt 30 Watt			EN442 Δt 50 Watt	Δt 30 Watt			EN442 Δt 50 Watt	Δt 30 Watt			EN442 Δt 50 Watt	Δt 30 Watt			EN442 Δt 50 Watt	Δt 30 Watt
K2019	177	17,2	8,8	K3019	185	23,5	12,3	K4019	200	31,7	16,5	K5019	200	38,8	20,2	K6019	200	45,8	23,8
K2026	260	23,9	12,2	K3026	260	31,6	16,4	K4026	260	40,0	20,9	K5026	260	48,9	25,6	K6026	260	58,1	30,0
K2030	292	26,5	13,6	K3030	300	35,9	18,6	K4030	300	45,5	24,0	K5030	300	55,7	29,2	K6030	300	66,2	34,0
K2035	342	29,3	15,0	K3035	350	41,1	21,2	K4035	350	52,3	27,3	K5035	350	64,0	33,5	K6035	350	76,2	39,1
K2040	392	32,3	16,6	K3040	400	46,3	23,9	K4040	400	59,1	30,7	K5040	400	72,4	37,7	K6040	400	86,2	44,3
K2045	442	35,4	18,2	K3045	450	51,3	26,5	K4045	450	65,8	34,1	K5045	450	80,7	42,1	K6045	450	91,6	49,3
K2050	492	38,6	19,8	K3050	500	56,3	29,1	K4050	500	72,5	37,6	K5050	500	89,0	46,4	K6050	500	106,0	54,4
K2055	542	41,9	21,5	K3055	550	61,3	31,5	K4055	550	79,2	40,9	K5055	550	97,3	50,5	K6055	550	116,0	59,6
K2060	592	45,2	23,2	K3060	600	66,2	34,0	K4060	600	85,8	44,3	K5060	600	106,0	55,0	K6060	600	125,0	64,2
K2075	742	55,8	28,6	K3075	750	80,7	41,2	K4075	750	106,0	54,4	K5075	750	130,0	67,1	K6075	750	154,0	78,7
K2090	892	66,9	34,2	K3090	900	95,1	48,3	K4090	900	125,0	63,8	K5090	900	154,0	79,1	K6090	900	183,0	93,5
K2100	992	74,7	38,2	K3100	1000	105,0	53,1	K4100	1000	138,0	70,1	K5100	1000	170,0	86,8	K6100	1000	201,0	102,7
K2110	1092	82,6	42,2	K3110	1100	114,0	57,6	K4110	1100	151,0	76,3	K5110	1100	186,0	95,5	K6110	1100	220,0	112,4
K2120	1192	90,6	46,3	K3120	1200	125,0	62,9	K4120	1200	164,0	82,9	K5120	1200	202,0	102,6	K6120	1200	238,0	121,6
K2150	1492	115,0	57,8	K3150	1500	159,0	80,0	K4150	1500	202,0	102,6	K5150	1500	247,0	126,2	K6150	1500	293,0	148,9
K2180	1792	141,0	71,0	K3180	1800	192,0	96,1	K4180	1800	240,0	121,9	K5180	1800	293,0	150,4	K6180	1800	349,0	176,4
K2200	1992	157,0	78,5	K3200	2000	214,0	107,6	K4200	2000	266	134,5	K5200	2000	323,0	164,1	K6200	2000	386,0	196,1

Rese termiche in base alla normativa EN 442 con $t_M=75^\circ\text{C}$, $t_R=65^\circ\text{C}$, $t_A=20^\circ\text{C}$